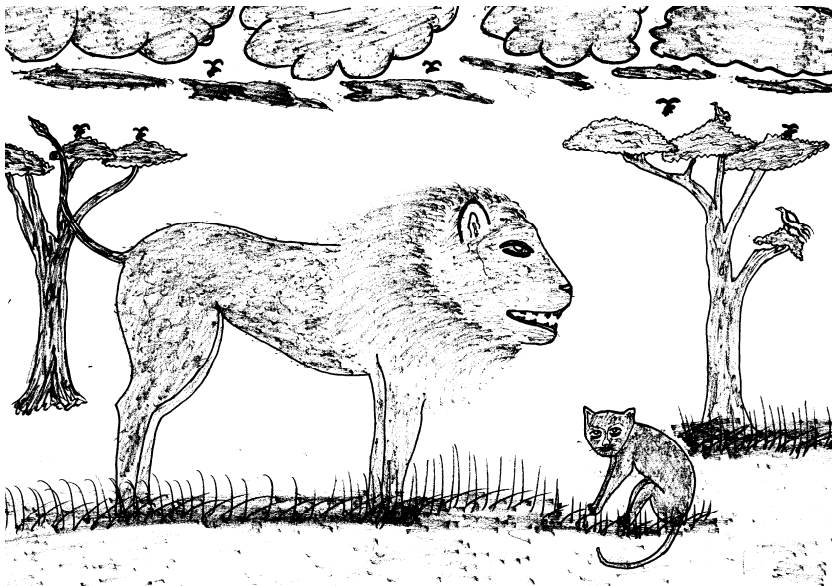


TSH 1,000/=

Kisafwa
Tuthamini lugha zetu

Ɔshitaabu Ɔshi vilaale Ɔvyi Shisafwa

Kitabu cha hadithi za Kisafwa



Ishitaabu ishi vilaale ivyi Shisafwa

Kitabu cha hadithi za Kisafwa

Huduma ya Kutafsiri Biblia
na Kuendeleza Lugha za Asili, Mbeya
S.L.P. 6359, Mbeya, Tanzania
literacy_mbeya@sil.org

Pamoja na
SIL International



Utangulizi

Huduma ya Kutafsiri Biblia na Kuendeleza Lugha za Asili, Mbeya, ilianza tarehe 23 Julai 2003. Ilianza kwa ushirikiano kati ya viongozi wa makanisa na mashirika mbalimbali na SIL International.

Kusudi letu ni kuwahudumia watu wa makabila yafuatayo: Wabena, Wabungu, Wakinga, Wakisi, Wamalila, Wamanda, Wandali, Wanyakyusa, Wanyiha, Wapangwa, Wasafwa, Wasangu na Wavwanji.

Lengo letu la kwanza ni kuyafikia makabila hayo kwa Neno la Mungu (Biblia) katika lugha zao kwa sababu tunaamini MUNGU ANAONGEA LUGHA ZOTE!

Lengo letu la pili ni kuwaheshimu watu wa makabila haya kwa njia ya kuwafundisha kusoma na kuandika lugha zao (Idara ya Kusoma na Kuandika Kilugha).

Sera ya Utamaduni ya Tanzania inasema hivi:

3.2. Lugha za Jamii

Lugha za jamii ni hazina kuu ya historia, mila, desturi, teknolojia na utamaduni wetu kwa jumla. Aidha, lugha hizi ni msingi wa lugha yetu ya taifa, yaani Kiswahili...

Kichwa: Ishitaabu ishi vilaale ivyi Shisafwa (Safwa Story Book)

Lugha: Kisafwa

Michoro: Aman Jeston Helambili, Yohana Hamisi Baharia

Kimeandikwa na: Nikodemus Mumila, Melkisedick Mpayo, Nickson Nkembo

Vya viliho umu

Ulubhaatiho

1. IGOBE HWWILANGA AJE, ILI NI NJEELE
ASHLE HANU IZYINJI 1
2. ABHAJENU BHA SAGA BHINZILE 3
3. YEENU IGONGOLO SAGA LILI NA MAASO 5
4. INSAMA NI HAAWA ZISAANU 6
5. UMUNTU NI MBWAJI 7
6. IJHLA 9
7. ABHULE UHWA NALYOLI 12
8. IMBUUNI IHUN'KHATA UMWIBHA 15
9. IPUNGU NI NSONGOSOOLO 16
10. ULWESE LWI NSAMAGOOYA 18
11. INYIMVWI YAHANDILE BHULI AGALUUHANE
INGOOLA YAAKWE 19
12. UMUNTU WA SAGA ASALIFYA 20
13. INSAMAGOOYA NI MBWAJI 22
14. WAHAIVUNA HA WAHATOTILE 25
15. INYUMBA YA NAANU? 27
16. IGOBE NU YISEVYALA WAAKWE 29
17. YEENU IDIIMI BHAHULIKWIZYA N'GOOSI 31
18. YEENU INYAABHU ISUNGWA AKHALE MWA
BHATELESHELA ABHASHI 33
19. INYAABHU NAHAGAGA NGOOYI 35

1. IGOBE IHWILANGA AJE, ILI NI NJEELE ASHILE IHANU IZYINJI

Imandi ihanu zyonti zyahitihiine huje, iGobe yi li ni njeele ashile ihanu izyinjji zyonti mu nsi. Isiku limo umwini ahanzaga amanye huje, “Lyoli iGobe yi li ni njeele?” Ahayikwizya iGobe na huyipeele idule, ahaga, “Nka kale inyumba ni dule ilyo lyi hupiiye, imbala manye huje, lyoli uli ni njeele ashile ihanu izyinjji zyonti. Nantele imbala hubhiishe huje, ubhanje mwitongwa waani un’goosi.”

Igobe yahasiibha mwi twe, yaheega idule, yahabhala nalyo. Yaham’uzya un’shi waakwe aje, “Thumiinye hwa bhahuganza haani amadule.” Nabhubhiila, ahasogola abhale hwa n’chuluzi waakwe. Lwa hwabha hiisi haani, ahapootwa ajende, ahinjila mu nyumba ya muntu umo un’imi, ahan’amuha. Un’khaaya ula aham’posheela shinza tee, aham’peela ishalye. Lwa waamala alye, ahanda hum’mamile ahaga, “Nani ni wamwenyu, indi n’imi. Nantele ishula-shula haani, akale na kazye ivintu. Lumo nahan’shuliiye un’gubhi hu mwanya, ahampiye idule.” Ahan’anga idule ahaga, “Idule ili nka teleshe, ligakwilana ikhaaya yonti ini na sagazye.” Lwa wayanga isho, un’khaaya ula ahaga, “Teenye idule ilyo.” Aham’peela. Un’khaaya waakwe ahaswiga haani aje, “Idule idoodo nanshi ili ligatikwila ikhaaya yonti!” Un’khaaya ahaga, “Hwilile, tibhiishe tihakazizanye indaabhi.” Nusiku lwa bhagonile, imbuzi yahalya idule liila. Lwa hwashya, iGobe yaham’uzya umwani nyumba aje, “Nka saga ihulyaga idule, imbala fwe.”

Un’khaaya ahaga, “Ega, nahupeela imbuzi, bhalaga nayo. Nka waafiha hu khaaya yaaho, uyigoje, ulyeje idule lyaho.”

iGobe yahasungwa. Yahasogola abhale ni dala lyakwe. Lwa hwila, yahinjila mu nyumba iya hwande, ya yahayilolile. Umwani nyumba ahasugaga ihanu. Ahali muntu wi nkambu hu bhantu, haani hu bhajenu. Ahamwambiilila shinza un'jenu waakwe. Ahali ni nyumba zinyinji, zimo mwa zyahakhalaga ihanu zyakwe. Nsiku insama yaakwe imo yahagoga imbuzi. iGobe yahakhoola, yahaga, "Abhii bhii naafwa!" Un'khaaya waakwe ula wa suga ihanu aham'uzya aje, "Imbala hukalile imbuzi iyamwabho." Leelo iGobe yahakhaana.

"Imbuzi ini nahakalile ya kalanye ni nyumba na holo waani umo, ya khala uhutali uhwo." Un'suga ihanu ula, aham'peela inyumba yeeka, pipo ahali na mayumba gaminji. iGobe yahaweela hwa mwini, yaham'uzya aje, "Naakala." Umwini aham'pampuzya, ahazyaga zya nalyoli. Umwini ahayibhiha iGobe aje, yi hanu iyi njele ashile ihanu zyonti izyinji, na huyisalule abhe mwitongwa waakwe un'goosi.

2. ABHAJENU BHA SAGA BHINZILE

Imandi hwahali na bhantu bhabhiili, bha bhahegiine. Un'ume ahali ya Yanze, na n'shi ahali ya Selela. Isiku limo uYanze aham'uzya un'shi waakwe uSelela aje, "Bhabhala hwinze abhajenu abhamwamu pa khaaya ipa." UYanze aham'peela un'shi waakwe impiya izya kalile inyama ni nswi, ishalye sha bhajenu. Un'shi ahabhala akale vyonti vya vihwanzwiwa. Ahinjila hwi ziiho, ahateleha ishalye sha bhajenu. Lwa waamala ateleshe, ahabhala hu n'gunda peeka na n'ume waakwe. Bhahanda akunye amahogo. Un'shi aham'uzya un'ume waakwe aje, "Imba nkati ihwimvwa ahalanga." UYanze aham'uzya un'shi waakwe aje, "Hubha nkati abhajenu bheetu bhinzile." Ahalagazyu um'fyo, ahashimbila abhale hu khaaya. Huula saga ahan'ola nkumo. Ahinjila mu nyumba, ahalya ishalye shonti. Ahiitanya aminzi mu nyumba shaaha shaaha, ahaweela hu n'gunda, aham'uzya un'shi waakwe aje, "Abhajenu bheetu bhinzile, leelo bhasogweye." Un'shi waakwe ahaga, "Yeenu saga wankwizyaga aje, imbaposheele abhajenu?" UYanze ahamwamula ahaga, "Umfwile uwiila n'shi waani, bhahadigiine tee."

Lwa bhaweela hu khaaya afume hu magunda, uYanze aham'uzya un'shi waakwe uSelela aje, "Abhajenu bheetu bhaavu." Ahan'anga un'shi waakwe aminzi ga bhitananyinye shaaha pansu. Aham'uzya un'shi waakwe nantele aje, "Abhajenu bheetu bhahaiyinzwa ulungu gwa guhwizwa." Isiku lwa lyafiha, un'shi ahateleha ishalye sha bhajenu sha bhasiile abhale hu n'gunda. Hu n'gunda uYanze aham'uzya un'shi waakwe aje, "Imbale hu khaaya, ineenye abhajenu nka bhinzile." Ahaweela hu khaaya mwene, ahalya ishalye shonti isha bhajenu. Lwa waweela hu n'gunda, aham'uzya shishiila un'shi waakwe.

Nantele, lwa bhali hu khaaya, ahayanga aje, “Abhajenu abhanji bhani bhahwinza.” Ʋn’shi waakwe ahateleha ishalye isha bhantu bhani. Bhahabhala hu n’gunda nanshi wiila. Ʋn’ume nyeene aham’uzya nantele un’shi waakwe aje, “Ihwimvwa abhantu bhayanga, bhali nkati abhajenu bheetu bhinzile.” Ʋn’shi waakwe ahamiinye weene aje, un’ume waakwe sha bhala yanje, ahaga, “Bhalaga, ubheenye, bhangabha bhiihho.” ƲYanze ahabhala hu khaaya, ahanda azabhule inyama mu nsonta. Piniipo un’shi waakwe ahafiha, ahaga, “We Yanze, bhali hwi abhajenu?”

Ahabhussa induugu aje, an’khome un’ume waakwe, leelo un’ume ahapinga. Ahashimbila abhale hu khaaya ya khala unyina waakwe. Lwa waakhala insiku zibhiili uhwo, unyina wanda abhine. Ahasiibha aje, unyina abhala fwe. Ahabhala hu bhagoosi abhi shipanga shiila, ahahalajizya aje, “Unyina waani nka waafwa, muhan’syilaje. Nahaibhasomba, nka naweela afume hu chuluzi waani.” Isiku liliila nusiku, unyina ahafwa. Abhagoosi bhahayangana, bhahan’sonteelezya umuntu aje, am’uzye huje, “Unyina waaho amelile indevu, nantele ingoole zya mwini zimelile impeeta.” Inongwa izi zyahan’swijizya haani uYanze. Ipo uYanze ahaweela lubhilo, na khomaane nu m’vimba gwa nyina.

3. YEENU IGONGOLO SAGA LILI NA MAASO

Imandi iGongolo lyahali na maaso, leelo saga lyahali na manama. Yope iNzoha yahali na manama, leelo saga yahali na maaso.

Isiku limo hwahali ni chaaka yi hanu zyonti. Zyonti zyahasingwilwe abhale hu chaaka, zyahakhomaana mwi dala. Lwa zyahakhomaana, iNzoha yahaga, “Bhamwetu, mubhala hwoshi?” IGongolo lyahaga, “Tibhala hu chaaka, saga uyumvwiye?”

iNzoha yahaamula yahaga, “Inumvwiye.” IGongolo lyahaga, “Enya, saga ili na maaso! Nku hwanza uyeenye zyonti, ihwazimye amaaso gaani, nawe umpeele amanama gaaho. Ichaaka nka yamaliha imbala huweezeze amanama gaaho.”

iNzoha yahitiha, yaheega amaaso, ni Gongolo lyaheega amanama. Ichaaka lwa yamaliha, iNzoha yahanda hun’selenje uwamwabho. IGongolo lyahanda humwanze uwamwabho haani sinta humwaje.

Niishi, iGongolo lili na manama, ni Nzoha ili na maaso.

4. INSAMA NI HAAWA ZISAANU

Imandi yahagwiye inzala ingoosi haani mu nsi yi hanu. Hhanu zyahafwanga hu nzala, pipo imvula yahali niimo umwaha ugwo.

HAawa zyahajendaga-jendaga ahwanze ishalye. Saga zyahanzaga ishinza. Hee! Hwi! Shoshonti sha shibhala mu vyanda. Lwa zyafiha hwi soho limo, ahwenye ishi hunshinji, zyahayilola intombi yi fwiye. Zyahasalifya hu bhazimu bhaabho, zyahanda alinje huje, zilye. Zyahapotilwe abhoolanye inyama, pipo mpapa zyahaga saga zyahali nyooji. Lwa zisiibha ilya bhombe, yahinza iNsama. Yope ili ni nzala tee, yahimiilila. HAawa zyahasingwa tee ahuyilole iNsama, zyahaga, “Ishi tibhala gabhane shinza inyama, pipo iNsama ili ni mpapa intali nantele nyooji.” INsama yahagabhanya amapusa n’tanda gi nyama. Piniipo nalinaali yahapalanganya, yahanda shipya.

Yahagabhanya pa bhili. Ipusa lyeka yahabhiha hunshinji, yahaga, “Ili lya n’gabhani.” Yahagabhanya ipusa lya lisagiiye hu bhonti n’tanda. HAawa zyahalinga adalisye. Leelo iNsama yahabhoogofya aje, “Nka mudalisya, imbala fyule yonti.” INsama yahepa paala, yahabhala mwi gona ahweje amatanda aga pinyile inyama yaakwe. INsama yahasingwilwe haani atwale inyama hwa nshi waakwe. Ahabhaazyo iho, iNsama yahafumile ahweje lwulwo. HAawa zyahaga, “Ehee piniipa!” Zyahahwibhangaanya zitaatu, zyahafwa. Zya zyahasagiiye zibhili zyahayigwula iNsama iyinze. Lwa yaafiha weene iNsama, zyahayibhuzya huje, “Abhamwetu bhataatu bhafwiye. Ishi tagwulaga weewe uyonjeelele aje, tibhe bhataatu nka tifwe naati.”

INsama ahumvwe isho, yahadelegana, yahaga, “Ni wamwenyu, igolo imfumile hweje, shiniishi namwi muyiga...!” Yahalupamiha ulubhilo shi siile na maliize ayanje.

HAawa ziila zitaatu zya zyahafwiye, zyahabhaha nalinaali, zyahagabhana shishinza nyeene.

5. UMUNTU NI MBWAJI

Imandi hwahali na muntu umo wa hajendaga mwi dala. Lwa jenda ahabwila, ahanda ahwibhune ahaga, “Mwi, iga malabha!” Fwandi, humwanya hwi kwi hwahali ni Mbwaji, yimvwa umuntu ula lwa hwibhuna. Yahiiha, yaham’uziizya yahaga, “Wee muntu wee! Amalabha ga geenu?” Umuntu ula ahaga, “Uhwanza ugamanye amalabha?” Mbwaji yahaga, “Ee.” Ahaga, “Aha. Guliilila! hwinza.”

Umuntu ula ahabhala, aheega imbwa, ahayipinya mwi gunila, ahinza nayo papaala. Ahaga, “Igunila ili ugandi ahwavule nasuti afishe lwa naafiha paala pi kwi liila, uhasatulaje.”

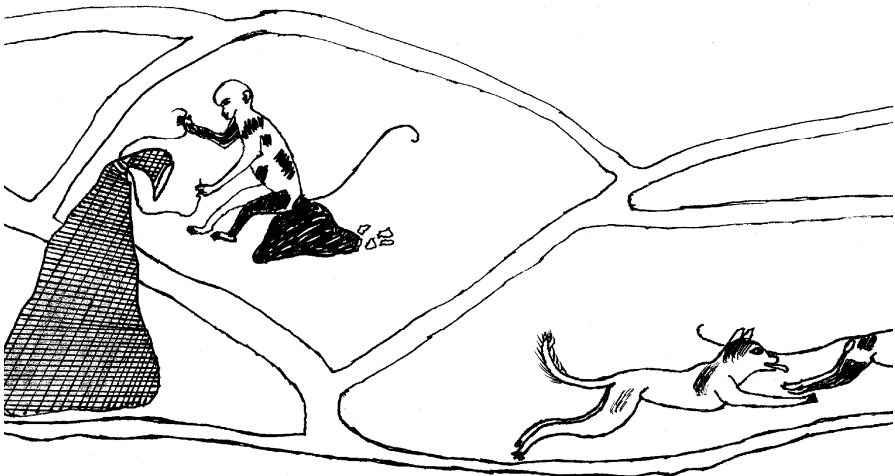
Ipo bhaheepile hu makwi hwonti huula, bhahabhala pi khombe. Umuntu ula lwa waafiha huula hwa hayanjile, iMbwaji yahasatula



igunila liila. Hee! Ahwenye ishi, ifuma imbwa! Imbwa yahayilola iMbwejji, vyahalumyanta, shimbizya, shimbizya, shimbizya, shimbizya. Imbwaji, uhwa shimbilile hwahabha nahumo, amakwi gope nagamo, likhombe lwene ipo, ikwi nka lyeka lya libhoneha.

Umuntu ula ahwenya hwa vishimbizanya, ahaga, “Ehee! Wanzaga ugamanye amalabha ga galihu ga giigo, leelo ishi gahwije.” Imbwaji ila yahakhatwa, yahaliwa ni mbwa.

Ishilaale shaani shimalishiye ipo.



6. IJHLA

Isiku limo uMagwila ahabhala hu magunda na bhapaafi bhaakwe. Un'gunda gwabho gwahali hutali. Isho bhahalabhiiye shampwi na paye ishalye shaabho. Lwa bhalima, bhahalita, bhahakhala pansu, bhahatũya na lye ishalye shaabho. UMagwila ahali ni lonji lyakwe. Abhapaafi bhaakwe lwa bhatũya, uMagwila ahangaga inyimbo inyinza haani ni lonji lyakwe.

Bhahabhũha, bhahanda alime nantele. Lwa bhalima, uMagwila ahimililaga-himililaga na hwanje inyimbo inyinza ni lonji lyakwe. “Hwilile. Tiweelaje hu khaaya,” uMagwila ahabhiizusya abhapaafi bhaakwe. Bhahabhũngaanya amajembe, na nyina Magwila ahateenya ingoomwa izya teleshele. Mwi dala lwa bhaweela hu khaaya, uMagwila ahiizuha aje, ayiwiilwe ilonji lyakwe hu n'gunda. Ahanzaga aje, aweele, ahweje ilonji lyakwe. Leelo uyise ahakhaana ahaga, “Imbala hulingaanyizye ilonji ilyamwabho hu khaaya.” UMagwila ahaamula, “Nku bhala andingaanyizye ilonji ilyamwabho, imbala bhe na malonji gabhiili.” Uyise aham'ũzya ahaga, “Nku hwanza amalonji gabhiili, imbala hulingaanyizye hu khaaya.” UMagwila umwoyo gwakwe saga gwahagwiliye. Ipo ahaga, “Nku bhala andingaanyizye amalonji gabhiili, imbala bhe na malonji gataatu. Saga shinza huliini, ahulileshe ilonji lyani huula hu n'gunda.”

Uyise ahamwitishila huje, abhale, ahweje ilonji lyakwe. UMagwila lwa waafiha hu n'gunda, ahabhaaga abhazimu punga (7) bhashima. Wope ahanda ashime, ahaga, “Bhazimu, mulilolile hwi, ilonji lyani? Lya nahiwiilwe mu n'gunda gwetu? Ininzile hulyeje.” Abhazimu bhahamwamula sha bhashima, bhahaga, “N'sahaala, ilonji lyaho libhalile. Umwini weetu alyejile. Tibhala

hutwale hu khaaya yaakwe.” Ipo bhahan’twala uMagwila hwa mwini waabho. Bhaham’peela iteefu lya litabhiilwe ni goolodi, leelo ahakhaana ahaga, “Indi mwana m’pina. Imfumile mu shikholo ishapiina, saga ihaliye nka lumo iteefu nanshi ili.”

Ahwiyiise hwa n’sahaala unu hwahan’swijizya tee umwini wa bhazimu. Bhaham’peela ishitala isha gonele. Ahakhaana, ahagona pi teefu. Shandaabhi yaakwe bhahan’anga amalonji gataatu ga bhalingiinye ni goolodi, ni jela, ni kwi. Ahasalula ili kwi. Umwini ahaga, “Abhala hunsupe.” Ahaleeta insonta inkulu, aham’peela. Ahaga, “Nka waafiha pa nyumba yeenyu, wahabazule insonta ini.” UMagwila ahan’salifya umwini, ahabhala humwabho. Lwa waafiha, ahabazula insonta ila, nanshi umwini wa bhazimu sha han’anganyiziize. Piniipo inyumba yaabho ya yahali yi mata, yahagaluhana, yahabha yi njelwa, yitimiilwe na mabaati na madiliisha agi magalaasi. Muuhati mu nyumba mwonti mwa mwahalalile mwahabha mupya.

Abhapaafi bha Magwila bhahabha bhatabhazi, bhahabhaana abhamwabho aseshela utabhazi wa bhali nawo. Bhahabhapanjila ishuma isho sha bhashiije. Un’shi umo itaawa lyakwe ahali ya N’kundiye ahabha ni jila mu mwoyo. Ipo indaabhi yaakwe nashampwi, wope ahabhala hu n’gunda nu mwana waakwe uN’zaala peeka nu n’ume waakwe. Bhalalileha ilonji lya N’zaala mu n’gunda. Mwi dala lwa bhaweela hu khaaya uN’kundiye ahan’sonteelezya uN’zaala aweele hu n’gunda, ahweje ilonji. Afishe hu n’gunda, uN’zaala ahabhaaga abhazimu punga (7) bhashima, leelo saga ahashimile nanshi uwinji uMagwila. Ahabhabhuzya aje, bhan’twale hwa mwini waabho. Nalinaali abhazimu bhahan’twala hwa mwini. Umwini aham’peela amateefu gabhiili, ipya ni kulu. Umwene ahasalula ipya,

ahagona pa shitala sha mwini. Shandaabhi ahadaaya hwa mwini aje, am'peele insonta. Umwini aham'peela insonta zibhiili, impya ni nkũũũ. UN'zaala umwene ahasalula impya. Umwini ahanda hun'angaanyizye uN'zaala ahaga, "Lwa waafiha hu khaaya..." Sha siile na male umwini, piniipo uN'zaala ahatomoshela ahaga, "Aa. Imiinye iya bhombe." Ipo ahan'salifya umwini, ahabhala hu mwabho. Lwa fiha, anyina ahamwambiilila, aheega insonta ila. Nalinaali ahayibwanyizya pansu. Piniipo inyumba yahan'gwila, ahafwa. UN'zaala ahapulumuha, leelo ahavwaliye tee.

7. ABHULE UHWA NALYOLI

Imandi umwini wi hanu ahabhalile hu bhantu bhaakwe aje, ali na maganda ga gahwanziwa alimwe. Umwini ahazibhuzya ahaga, “Ya bhala maliizye nalinaali ashile abhamwabho, abhala humweje umwali waani.”

Imbelebheesya ni yamwabho injibha zyahabhala hwa mwini alime. Uhwo zyahazyaga inyonyi izyamwabho zini. Umwini ahahasalifya ahwinze hwabho. Ipo ahabhatwala hu maganda. Ahabhagabhanya shila muntu upaha lwakwe. Nantele, ahabhahuzya aje, “Nka mwamala, mwinzaje humbuzye.” Bhonti bhahabhomba hwi khone haani. Isiku ilyo, isanya lyahakholile tee, leelo namo ya hasajiiye. Insiibho zyaabho zyahali humweje umwali mwini. Nantele, zyahabhapeelaga ikhone ilya bhombe imbombo.

Lwa bhahalimaga, ahinza un’gogolo amo, ahabhalaabha aje, “Umo ayinze anaavwe antwinshe ingoomwa.” Bhasaanu bhahakhaana bhahaga, “Ahagogolo iha hahwanza hutiteezezye ahabhaazyo lwene.” Imbelebheesya yahan’olela inkumbu un’gogolo ula, yahabhala, yahamwawwa abhuzye ingoomwa. Un’gogolo huyisalifye imbelebheesya, ahayipeela ahabheyu, ahaga, “Uhaponye ahabheyu iha pansu mu n’ganda gwa bhahupimiiye.” Ahayibhuzya isho imbelebheesya. Imbelebheesya yahabhomba shishiila, sha han’anganyiziizye un’gogolo ula. Agundushe ishi, upaha lwakwe lwonti lulimiilwe.

Ahayibhuzya iyamwabho injibha, yope yahan’shimbiilila un’gogolo ula hun’abhe ahabheyu. Un’gogolo ula saga ahamwamula nka zimo. Injibha yahan’khoma ni kwi. Un’gogolo ula ahagwa pansu, ahafwa. Nalinaali injibha yahakwinshila um’vimba guula na masole. Ipo injibha yahaweela hu lyoga hwa wamwabho

iMbelebheesya, yahaga, “Ubhomba mbombo bhuli, lwa malile imbombo? Ega imondosi yaaho, saali avwime.” iMbelebheesya yahali mvwimi tee, yaheega imondosi nalinaali. iNjibha yahayibhuzya iMbelebheesya, yahaga, “Ani saga indi ni mondosi, imbala huhwanzilaje ihanu. Nka nayilola, nki ngaje, ‘Piha!’, pihaga nalinaali.”

Bhahajenda hadoodo, bhahagaaga amasole pa galundamiine. iNjibha yahasonta inyoobhe. Piipo yahayibhuzya iMbelebheesya yahaga, “Piha!” iMbelebheesya yahapiha. iNjibha yahakwinkula amasole na khoole aje, “Abhiibhi yoo! iMbelebheesya yan’goga umuntu.” iNjibha yahashimbila, yahayileha piniipo iMbelebheesya. iMbelebheesya yahadelegana tee. Yahabhala hwa mwini hum’uzye aje, “Imalile upaha lwani.” Umwini ahaswiga tee, piipo ahasiibhaga aje, bhanganbomba insiku zibhili. Umwini ahabhasonteelezya abhantu bhaakwe abhale asimishize.

iMbelebheesya, afume hwa mwini yahabhala hwa n’ganga alagule.

Un’ganga ahalagula huje, “iNjibha ya yahan’gojile umuntu, saga weewe.” Un’ganga ahayikwatizya iMbelebheesya umwenda gumo un’goosi, nantele umwinza haani. Ahayibhuzya aje, ibhale hu khaaya yi Njibha. Ahayilanganyizya ilya yanje. iMbelebheesya yahabhala hu khaaya yi Njibha. iNjibha yahashimbila alole ahantu ha li ni golole nanshi liila, piipo yahapotiilwe amanye.

iMbelebheesya yahaga, “Wee Njibha! Saga umhumanya ani? Ushunshimbila?” iNjibha lwa yaamanya, yahaweela. iNjibha yahaga, “Ulyije hwi, igolole ilinza mansi ilyo?” iMbelebheesya yahakhala panshi, nka yahanda hum’mamile yahaga, “Nahabhalile hwa mwini ayanje izya muntu ula ya naham’pishile. Umwini ahasungwizye haani hun’goje umuntu ula, piipo ahali n’ozi.

Ahansunta igolole ili.” INjibha yahatejelezyaga shinza tee. Ipo yahahwiyubhala yahaga, “Saga weewe wahagojile umuntu ula. Niini nahan’gojile.” INjibha yahabhala hwa mwini na hum’panjile zyonti izya fwe hwa muntu ula. INjibha yahasiibhaga aje, ibhala suntilwe nu mwini. Umwini ahaswiga tee lwa wimvwa inongwa izyo. Ahalajizya abhasikali bhaakwe aje, bhan’goje.

Indaabhi yaakwe ahayikwizya imbelebheesya ahweje umwali waakwe.

8. IMBUUNI IHUN'KHATA UMWIBHA

Imandi iMbuuni yahakumuushe haani, pipo yahali m'omvi tee. Yahali na n'gunda un'goosi haani ashile bhonti abhamwabho mu nsi ila. Bhahali abhamwabho bhamo bha bhahiibhaga iviyabho vyakwe nusiku. Lwa yaamanya, yahasitile ubhaga azyunguzye un'gunda gwakwe gwonti. Yahaleshile uyangwa hwinjiilile inyeene, na dubhule ahadobhooli hadoodo hunshinji yi lwiji. Yahagaliye ulwiji lwakwe. Yahinzaga asepe wiila un'gunda gwakwe.

Isiku limo iNsyeeleku ni Mbebha ziyahinjila ahwibhe mu n'gunda. Zyahazyaga imbalale iyiluuye ibhiishile hunshinji hu bhaga. Zyahanda abubune. Bubunu! Bubunu! Bubunu! iNsyeeleku yahafumaga hwunzi hahinji hahinji na weele. iMbebha yahabhuziilizya yahaga, "Huli nshi ufuma habhili habhili hwunzi?" iNsyeeleku yahaga, "Imbala hwunzi asyamulizye inyemba izya hwi lomu mu lubhumba."

iMbebha yahaga, "Ohoo!"

iNsyeeleku yahabhanga shi fuma-fuma hwunzi, nantele iweela. Swa! Swa! iNsyeeleku yahayibhuziilizya iyamwabho aje, "Inyintu wili yi swaswanya?" iMbebha yahaga, "Heelo lembuka. Saga aginza." iMbebha shi siile na male ayanje, umweniisho n'gunda ahafiha, ahabha pa lyango. Ahiigula, ahinjila na galile. Zyonti ziyahashimbila azyungule un'gunda. iNsyeeleku yahafumila pa hadobhooli haala. Fwandi, lwa yafumaga-fumaga hwunzi, yahabhalaga hulinjizye aje, isahangute haani na pootwe afume pa hadobhooli haala. iMbebha, iyamwabho hee eeh! Yahenyaaga hulye lwene, yahapootwa afume pa hadobhooli, pipo yahabussile tee ivyanda. iMbuuni yahayikhata iMbebha na huyikhome tee, yope iMbebha yahafwa piipo.

9. IPUNGU NI NSONGOSOLI

Isiku limo iPungu lwa lyahalyanga mu nyumba yaakwe, lyahamila ifupa. Ifupa liila lyahadagamala pi milo. Lyahalinga ahwiyeefwe ifupa, leelo lyahapootwa. Lyahabhala hu bhaholo bhonti hubhalaabhe aje, bhalyefwe ifupa liila. Bhonti bhahapootwa. Bhamo lwa bhahalingaga hulyefwe ifupa, pa bhahalizambizyaga tee muuhati. IPungu lyahaga, “Inyonyi ya yahaihuneefwa ifupa ili pi milo, nahaihuyipeela umwali waani abhe n’shi waakwe.” Inyonyi zinyinji zyahalinjile ahumwefwe ifupa, nka zimweje umwali waakwe, zyahapootwa. Isiku limo shalyabheela uholo waakwe ahinza humwenye. Ahamwaga mu malabha amagoosi haani, aham’uuzya ahaga, “Umaayi waani ahamilile ifupa amaaha gabhili ga gashilile. Tenti tahasiibhile aje, saga apona. INsongosooli ya yaham’oniizye umaayi.”

Bhahayikwizya iNsongosooli, yahinza. Bhahayibhuuzya ziila zyonti, yope yahatuma ilomu lyakwe itali mwi lomu li Pungu, yaheefwa ifupa liila. IPungu lyahasalifya, leelo lyahakhaana hum’peelee umwali waakwe aje, abhe n’shi waakwe, lyahaga, “Wahaminye aje, ugamponia, leelo warumile kati, wagulaga aje, indaabhe suti?” INsongosooli yahalangana lwene ahwamvwe amazwi igo. Inyonyi zinyinji zyahalinga huyikundiizye, yope yahakhaana.

Lwa gahashila ameezi gaminji, iNsongosooli yahanda hulishulile iPungu hahinji hahinji hu khaaya yaakwe. Saga hwahashila ahabhaazyo ahagoosi, bhahamanyana. Leelo iNsongosooli inyeene zyahali sha ziliho hu mwoyo, yahagulaga ahabhaazyo ahinza aha weezeze iliiga. Hanga yaheegaga un’shi uwamwabho, yahaanile inyonyi zyonti hu weeji waakwe. IPungu ni Nsongosooli zyope zyahaniilwe. Izi zibhili bhahazipiiye ubhiga lweka.

Ivvalye vyahali vinji, inyonyi zyahaliye na mwele. IPungu lyahabha lya hwande akholwe. INsongosooli yaheega ahafupa ahooji, uhwu humwanya hagondanu, yahaponya mu bhiga. Yahayibhuzya iholo yaakwe yi kholiilwe aje, “Tilyanje!” IPungu lyahalila pooka na hafupa haala. Ihombwa yahaleluha, lyahanda ashimbihane shaaha uhwu nuuhwu aje, bhalyavwe. Inyonyi izyamwabho zyahaga, “Uli lipafu!” Inyonyi ya yinzaga huyaavwe, yahali Nsongosooli, leelo yahakhaanile.

Afume ulwo ni leelo iPungu lili ni zwi ibhiibhi. Ahafupa haala saga haheepile pi milo.

10. ƆLWESE LWI NSAMAGOOYA

Ɔmandi hwahali na habhaazyo ahatali ha saga hahali na minzi, pipo imvula saga yahatoonyile amaaha gataatu. ƆNsamagooya yahamwilwe tee aminzi. Isiku limo yahazyunguula mwonti mu magamba na mwi khombe ahwanze aminzi. Leelo, yahapootwa ahugaaje.

Lwa yajenda haani, yahafiha pi khombe pamo pa poloobhe. Yahasiibha aje, “Ɔpa, lumo ingagaaga aminzi.” Yahanda ahwanze uhwu nuuhwu. Pamandi yahahaaga ahasooho ha hali na minzi. Yahasha tee na hubhasalifye abhazimu bhaakwe. Yahamwela ni nyoota yaakwe yahamaliha. Lwa yamaliha inyoota yaakwe, yahanda ahwenye uhwu nuuhwu, yahayilola iNsenjele imwela aminzi huntende hwa libhala isooho.

ƆNsamagooya yahabhala pi li iNsenjele, yahanda ahuyibhuziizye iNsenjele aje, “Yeenu utiga aminzi? Saga umanya aje, unangaanya aminzi isho?” ƆNsenjele yahaamula uhu idelegiine, yahaga, “N’kumususu, aminzi gafuma huliwe nka gahwiha huliini uhu, ingatiga bhali?” ƆNsamagooya yahaga, “Ehee niizuha. Ɔso ahandabhiziizye tee umulungu gwa gushilile ugwo!”

ƆNsenjele yahalangana! Yahaga, “Ani, udaada ahafwiye hali shi ndi sha mwana.” ƆNsamagooya yahiizuha yahaga, “Aha nahiwilwe! Ahali ya bhinyu saga ya so, niizuha.” ƆNsenjele yahashililila aswiye yahaga, “Umaayi ahafwiye hali, ga gaashila amaaha ishumi ishi pa hafwiliye.” ƆNsamagooya yahaga, “Ishi saga insaaga ya naanu ahandabhiziizye...” Nalinaali piniipo yahayidomoshela na huyizembulanye iNsenjele.

11. İNYİMVWİ YAHANDİLE BHŪLİ AGALUUHANE İNGOOLA YAAKWE

İmandi İNyimvwi ni Nsyeeleku zyahavisiinye tee, saga zyahimvwanyaaga. Wiila İNsyeeleku nka zyayilola İNyimvwi, zyahayisufwanyaaga na huyilije. İNyimvwi yahali mpumakati, nantele yahali ni nsoni. Saga yahasangwizye abhapalamani bhaakwe sha bhahayibhombelaga. Yahasaama abhale ahwanze ukhalo uhwinji. Lwa yapootwa huwaaje ukhalo uhwinji, yahaweela huhuula uhukwulu hwa yahakhalaga ni Nsyeeleku. Yahakhiye na zugumizu haani, saga ahali nka weeka uwa hun'gwizye umwoyo.

Isiku limo yahabhala hwa Haawa, yahayipanjila amalabha gaakwe. İHaawa yahitiha ahuyaavwe.

İHaawa yahaga, “İmbala hupeepele un'embo ugwa je, ugabhala poponti paala, abhalugu bhaaho bhagandi hulole.” İHaawa yahayeega İNyimvwi abhale nayo mwi gona. Huula yahabulula amatundu, yaharwula, yahayipeela İNyimvwi, yahasyola. Lwa yasyola lwene amatundu gaala, yahayilola igaluuhana ingoola yoyonti yi sungwa inyeene. Nantele, amatundu igo gahayipiye ikhone iya fumye un'kwula ugwa gojele abhalugu bhaakwe.

Lwa yaweela hu khaaya, yahagoga İNsyeeleku zinyinji na n'kwula guula. İNsyeeleku zyahadelegana haani hwi khone lyi Nyimvwi, zyahan'aabha umwini waabho azyavwe. Umwini ahayikwizya İNyimvwi hu khaaya yaakwe, inyeene yahakhaana.

Pamandi İNsyeeleku zyahasaama na bhale akhale mu mbumba zyi nyumba na mu magulu. Shiniisho ni leelo İNsyeeleku zikhala mu mbumba zyi nyumba na mu magulu.

12. UMUNTU WA SAGA ASALIFYA

Ahaliho umwana umo ahali m'piina, uyise na nyina waakwe bhahafwiye hali.

Ahaleliilwe na maama waakwe um'papaanyina, wope ahali n'gogolo, saga ahalimaga. Umwana uyo itaawa lyakwe ahali u Mbwigwa.

Umwana uyo ahateenyaga inkwi mwi sengo huje, akazyee na kale ishalye shaabho. Leelo lwa li ateenyee inkwi, ahateelaga inteelo iya hwibhunanzye, ahagaga, "Wee m'piina weewe, umaayi agaliho, amalabha iga handi nagamo. Awe m'pango, uli m'iibhi."

Insiku inyinji nkashele abhala hwi sengo, ahateelaga inteelo yiiyo. Inyonyi zyahatejelezyaga.

Isiku limo inyonyi zyaahan'saajila tee sha hwibhunanzya, zyaahan'nyumula, zyahabhala nawo hu nsi iya hutali tee ya saga yahali na mwini. Zyaahan'salula, ahabha mwini wi nsi ila yonti, bhopee abhantu bhaham'mwamiha tee. Aheega abhashi bhabhinji, bhahapaapa abhaana bhabhinji. Ahabha n'tabhazi tee. Ishuma shahamwitaha.

Leelo umuntu unna lwa waapata ugoosi abhe mwini, ibaado lyahamwinjiye. Ahanda hubhalije abhantu na hubhabhuzye huje, "Amwi muli bhapiina." Nantele, ahiiilwe hum'peelee ishalye umaama waakwe, nanshi sha habhombaga wiila. Inyonyi zinyinji zyahabhalaga pa khaaya yaakwe. Isiku limo zyahimiliye panzi. Lwa huzilola lwene, aheega intuguwa na huzikhome. Ahaziliga ahaga, "Epi! Muhunselufya pa khaaya yaani." Inyonyi zyahasogola, zyahabhala hwi sengo hu zyamwabho.

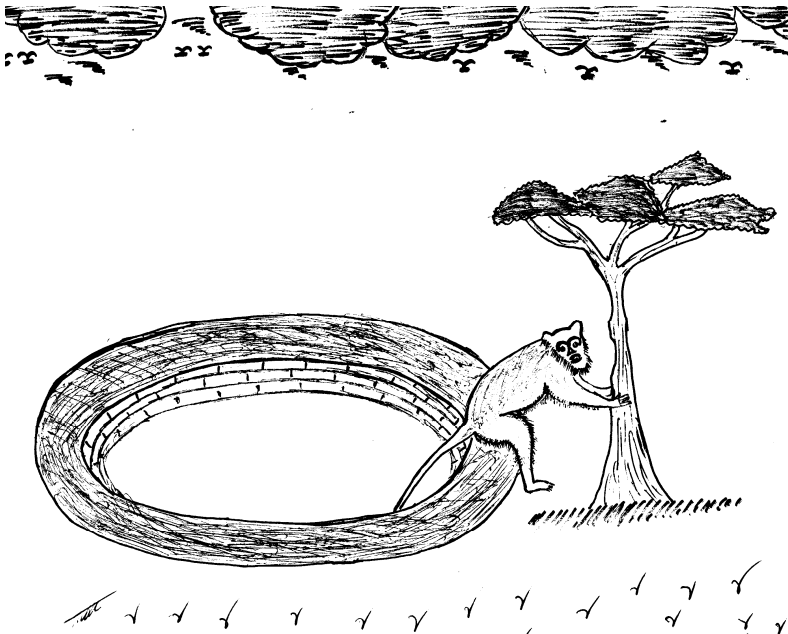
Insiku lwa zyashila hashe lwene, zyahabhala nantele, zyahamwaga panzi pa khaaya yaakwe. Zyahan'nyuumula na humwezye hwi sengo huhuula hwa hateenyaga inkwi. Umbuga ahaweela hwa maama waakwe. Umaama waakwe ahajile, "Wee Mbuga, winza, wanaaga. Awe unza bhe shu yimba mu khalo waaho wonti, pipo saga uli ni nsalifyo. Enya wahandeshile sinta muntu uwa hunaavwe. Awe saga wahazisalifiizye inyonyi zya zyahabhombiye imbombo iya hunyuumale na hulongole hu nsi ya wahakhiye shinza na pate ishuma ishinji."

Umbuga ahajile, "Weewe maama, saga wahamanyiziizye asalifye abhantu." Ipo ahajendelela abhombe imbombo yaakwe iya hwande iya teenye inkwi na kazye, nka kalaje ishalye. Umbuga ahabha m'piina na wa humwavwe ahabha nnumo.

13. INSAMAGOOYA NI MBWAJI

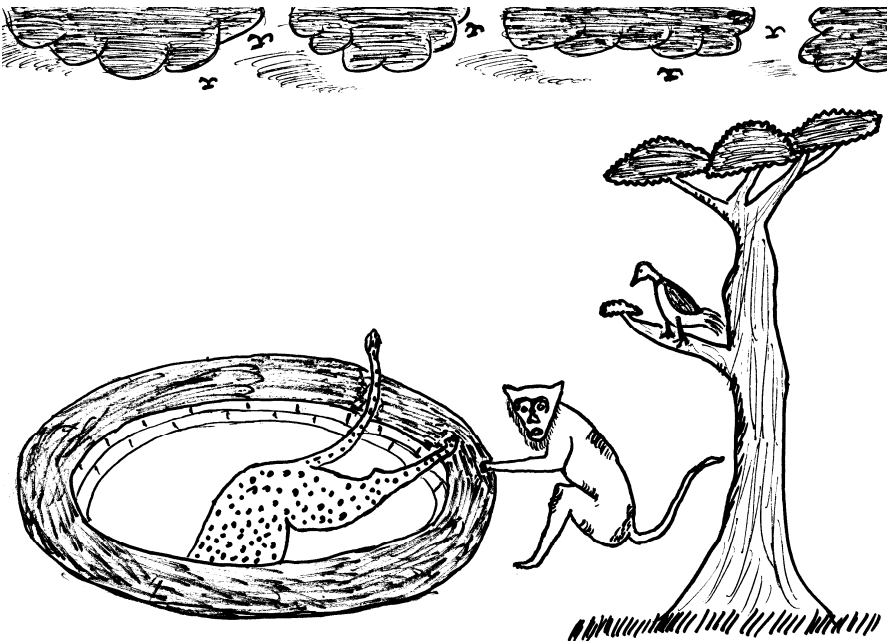
Imandi yahali iNsamagooya ni Mbwaji. INsamagooya yahadumbushiiye mwi liina itali. Yahakhoolile tee, leelo nũmo ya hinzile huyaavwe, pipo iliina ili lyahali hutali ni dala lya bhajenda abhantu. Nantele hwahali shisanya, aminzi gahũmũle mwi liina. Nka saga shiniisho, handi yagabuuye aminzi na fwe. Yahakhiye mwi liina ilyo insiku zitaatu ni nzala.

Lwa zyashila insiku zini, iMbwaji yahashila papaala, yahũmvwa ahantu hakhoola izwi ilya pansi. Yahatejeelezya shinza, izwi lyahafumilaga hwi liina. Yahazũmbũla, yahayilola iNsamagooya igandile ni nzala, ihwanda afwe. Ipo iMbwaji yahagolosya ũlubinda lwakwe mwi liina. Yahayibhũzya iNsamagooya aje, “Khata ũlubinda lwani.”



INsamagooya yahakhata ulubinda lwi Mbwaji, yahafuma mwi liina. Lwa yaafuma lwene, yahayidomoshela iMbwaji na huyikhate aje, iyizembulanye na huyilye. IMbwaji yahalamba aje, “Ushandye!” Leelo iNsamagooya saga yahasungwa atejeelezye. Yahinza iNkunguulu. Piniipo yahayibhuziiliza iMbwaji aje, “Yeenu? Huli nshi?” IMbwaji yahaga, “Najendaga, pa namvwa ahantu hakhoola. Abhale ahwenye hwa hakhooela, nayilola ini iNsamagooya ili mwi liina. Nayigolosezya ulubinda lwani. Lwa yaakhata ulubinda lwani, nayifumya. Lwi gulila aje, insalifye, yandomoshela, ihwanza angoje.”

Yope iNsamagooya yahitiha aje, zyi yanga iMbwaji zyi lyoli. INkunguulu yahaga, “Uhunalanganya ani, Nsamagooya. Wiila ani nahasibhililaga aje, eli muntu wi nsiibho inyinza. Ishi leelo, zyenu zyuh bhomba izi?” INsamagooya yahaamula yahaga, “Nani



waayo, saga nahasungwizye ahuyibhombele ishi iMbwaji. Impotiilwe-pootwa, ingonile ni nzala insiku zini. Nka saga indya, imbala fwe.” INkunguulu yahaga, “Zyu yanga zyi lyoli, leelo heenu aje, uyisalifye nasuti iMbwaji, nku yilyanje? Ingabhiye niini, sha ninzaga bhombe.”

INsamagooya yahanzaga amanye aje, “Ingayisalifya bhuli?” Leelo saga yahasungwizye iNkunguulu shi weezya mwi sinda ahabhaazyo, yahaga, “Nalamba mbuzye nalinaali. Ihwanza afwe ni nzala.”

INkunguulu yahayibhuzya iNsamagooya aje, iyiname mupiipi ni liina, ibhuzye amana gaakwe aga hwilongolela. INsamagooya lwa yalinga akhonzye isho, yahagwila mumuula mwi liina. Yahalinga akhoole na lambe aje, ziyifumye, leelo iMbwaji ni Nkunguulu zyahakhaana.

Indaabhi yaakwe, yahafwa.

14. WAHAIVUNA HA WAHATOTILE

Imandi hwahali na bhapalamani bhabhiili. Bhonti bhahali na bhashi, leelo saga bhahali na bhaana. Leelo umo ahali ni mbwa yaakwe yeeka, ahayigiine haani. Ahabhalaga nayo avwime ihanu. Yahagogaga nyiini na hun'eetele. Ahamanyana nayo imbwa iyo tee, yahabha aje, mwana waakwe.

Isiku limo ahashuula, ahabhala hu bhaholo bhaakwe, hwahali impungo. Ahagona insiku zibhiili, isiku ilya taatu ahaweela hu khaaya yaakwe. Lwa waafiha, um'palamani waakwe aham'uzya aje, "Lwa wahali numo, imbwa yaaho yahagojile inkuku yaani. Ishi uyinzile, injiga, uyigoje imbwa yaaho." Umwani mbwa ahaga, "Nalamba tee muntu weewe! Insombe inkuku yaaho." Um'palamani waakwe ula ahakhaana asombwe, ahaga, "Ugoje yi mbwa!"

Ipo umwani mbwa ahaga, "Saga ingagoga niini imbwa yaani, pipo ili nanshi umwana waani. Pa goga weneewe." Umuntu ula aheega induugu, ahayikhoma ulwa hwande. Yahagwa, saga yahafwa, yahabhaha. Ahakhoma ulwa bhiili. Yahagwa na fwe. Umwani mbwa ahalila tee na huyinumele imbwa yaakwe. Ahasogola nayo abhale asyile. Lwa padiila, umuntu ula ya hagojile imbwa ya wamwabho, ahapara umwana. Umwana ula lwa waakula, ahabha mwibha. Isiku limo ahabhala mu n'gunda gwa m'palamani waabho, ahavunza iyabha limo, ahanda alye. Umuntu ula ya bhahagojile imbwa yaakwe, ahamwaganyizya, ahan'khata, ahan'twala hwa yise, ahaga, "leelo nani namwaga umwana waaho ahwibha amubha gaani. Ishi, nawe n'goje nalinaali."

Umwani mwana ula ahaga, “Wee muntu weewe! Saga bhagoga umuntu!” Ula ya bhahayigojile imbwa yaakwe, ahaga, “Izuha nawe huje, imbwa ya wahagojile, nani ahali mwana. Ishi, nawe goga!”

15. INYUMBA YA NAANU?

Imandi haani hu nsi iya hutali afume huliiti, hwahali na muntu ummo ahali na bhaana bhataatu.

Abhantu ibho bhahinzile hu mpanga yeetu, bhahandile abhombe imbombo hu bhantu ahwanze impiya. Lwa bhaafiha huliiti, bhahahwigabhile. Shila muntu ahabhalile na muntu waakwe, abhale hum'ombele imbombo.

Hu khaaya huula bhahasagiye abhapaafi bhaabho. Bhope bhahagolushe tee, saga bhahali ni khone iya bhombe imbombo. Bhahalyanga ishalye sha bhahabhabhombelaga abhaana bhaabho. Lwa gaashila amaaha gaminji, ivyalye viila vyahamaliha. Bhahanda abhale hu bhapalamani alaabhe ishalye. Abhaana bhaabho bhaala bhahali sha bhasiile aweele. Pamandi abhapaafi bhaabho bhonti bhahafwa.

Abhasahaala bhaala bhonti bhahatabhiye impiya, bhahakhomaana pandwimo, bhahitihana huje, “Ishi bhaya, tizenje inyumba uhu. Nka taamala, tibhale, tibheeje abhapaafi, bhinze, bhakhalaje peeka naati.”

Uwa hwande ahafyatuuye injelwa na pembe. Uwa bhiili ahapimile inyumba na zenje. Uwa taatu ahapaliishe na tiime.

Lwa bhaamala imbombo zyonti, bhahakhala, bhahaga, “Ishi, timalile imbombo zyonti. Tibhale, tibheeje abhapaafi, bhinze akhale ipa.” Ipo bhahanda asogole abhale hubheeje abhapaafi bhaabho. Lwa bhaafiha hu khaaya huula, bhahega bhonti bhahafwiye.

Bhahakhala paala pamwabho, ahubhasalifye abhantu hu mbombo iya hubhasiye abhapaafi bhaabho. Lwa bhadiila insiku zinyinji, bhahaweela hu nyumba yaabho.

Lwa bhaafiha, bhahaga, “Tisikhale bhuli tibhataatu mu nyumba yeeka?” Ya hafyatuuye injelwa na pembe, ahaga, “Inyumba yaani! Ani niini imbobile imbombo ingoosi!” Ya hapimile inyumba na zenje, ahaga, “Inyumba yaani! Ani niini imbobile imbombo ingoosi tee!” Ya hapalishe na tiime, ahaga, “Inyumba yaani! Ani niini imbobile ashile mwenti!”

Awe bhaavwe, ibhe ya naanu?

16. IGOBE NŪ YISEVYALA WAAKWE

Imandi hwahali iGobe nū yisevyala waakwe. Isiku limo iGobe yahanza amanye aje, weenu n'shevu, ūmwene nū yisevyala! IGOBE yahan'kwizya ūn'shi waakwe, yaham'ūzuya yahaga, "Ani indi n'shevu ashile ūso. Imbaswiga abhantu bhayiga, ūso n'shevu ashile abhantu bhonti mu nsi ūmu."

Ūn'shi waakwe aham'ūzuya ahaga, "Awe ūli mwana n'doodo. Ūdaada ahandile hali ūshevu waakwe, sha siile apaapwe ūmuntu nkūmo mu nsi ūmu." IGOBE yahaseha tee na gwe pansi, yahaga, "Ishi ūmbūzuye, ahabhombelaga weenu ūshevu, nkū yiga, ahandile hali sha bhasiile abhantu apaapwe mu nsi ūmu? Sha shiisho ani ikhaana apanje ipangwi na bhashi. Enya, ishi ūhwisangaanya wū mwene. Ani insungwa alole ahantu habhombeha, saga ihwanza apanjilwe."

Shalyabheela iGobe yahan'sonteelezya ūmwana waakwe ūShambo hwa maama waakwe ūMwanibhanza aje, "Ūn'aabhe huje, ankalile ihombwa inyinza, indi na bhajenu." ŪShambo ahabhala hwa maama waakwe, aham'ūzuya zya n'tumile ūyise waakwe. Nantele ahonjela ahaga, "Ūdaada ajile, 'hombwa iyo yū bhala kale, igandi ahwengwe mu nsi ūmu, nantele igandi afume hu nsi izya hwanzi." ŪMwanibhanza ahamiinye ūyisevyala sha li. Ahakhala ahabhaazyo hashe, ahan'sonteelezya ūShambo hum'ūzuye aje, "hombwa iliiho. Leelo ūm'ūzuye huje, ūmuntu ūwa nyeemule agandi abhe n'shi awe n'ume."

Injeele zyi Gobe ipa zyahapeleela, ūshevu wahapeleela, izya bhombe zyahan'teega. ŪMwanibhanza lwa wagulila hu habhaazyo, ahan'sonteelezya ūmuntu ūwinji hwa gobe aje, "Ūmuntu wowonti

aganyeemula ihombwa, leelo insayo iyi hambwa agandi akhate.” Izi ziyahabha home tee ashile zya hwande.

Ipo iGobe yahan'kwizya un'shi waakwe na hum'uzye zya m'uziize uyisevyala. Un'shi ahaseha na hum'uzye aje, “Nahabhuziize aje, udaada saga ugamena ushevu awe. Nku hwanza, un'aabhe alangaanyize ushevu.” IGobe saga yahasungwilwe abhoneshe aje, imeniilwe. Yaham'uzya un'shi waakwe aje, “Nanzaga aje, imanye-manyanya lwene aje, utayivyala ali bhuli bhuli!”

17. YEENU IDIIMI BHAHULIKWIZYA N'GOOSI

Imandi tee uhwo hwi gamba ilya hu Tukuuyu hwahali ni diimi ilyi minzi. Idiimi ilyo lyahali papipi ni gamba, nantele lyahali lyini uhwo. Abhantu bhahandile azumbiile hashe hashe azenje. Lwa gaashila amaaha gaminji, ikhaaya zya bhantu zyahapalamila tee ni diimi ilyo.

Abhantu bhahasujile ing'ombe, imbuzi, inkuku, ingoole. Bhahasujile ni vyinji vivinji.

Ipo pi diimi ing'ombe nka yazumbiila, yahadumbushilaga na teeje lwonti.

Nka yadumbushila imbuzi, yahategaga lwonti. Inkuku nka yazumbiila, yahadumbushilaga mwi diimi ilyo na teeje lwonti. Bhahanda na bhaana bhope nkashele bhazumbiila pi diimi ilyo, bhahadumbushilaga umwo na teeje.

Ipo abhantu bhahakwizanya bhonti, bhahayanga bhahaga, "Mwi, tibhombe bhali ni diimi ili?" Bhamo bhahaga, "Tisaame!" Bhamo bhahaga, "Saga tigasaama. Tizenjile tee."

Umo ahaga, "Tibhombe bhali?" Ipo umuntu umo ya bhahamwumwaga tee pa khaaya ila, ahaga, "Mwi, idiimi ili... Inzaji, tanze iwe igoosi tee, tilizumbizye pi diimi. Shila muntu abhale, ayanze inkwi."

Bhonti bhahitiha. Bhahabhala ahwanze inkwi, na huzileete inkwi. Umuntu ula ahaga, "Ishi teeje umwoto." Bhaheega umwoto. Ahaga, "Ishi tande apembe iwe ili." Ipo bhahanda apembe iwe liila, bhahapembile usanya wonti. Hwahiilile, bhahajendeliye afishe nusiku. Afishe nindaabhi, iwe liila lyahabha lipiye tee, lyahabha cheee! Ipo umuntu ula ahaga, "Ishi, tanze amakwi, tibhungulusye iwe ili, libhale mwi diimi."

Bhaheega amakwi, bhahanda abunshile iwe liila, lyahabhunguluha na dumbushile mwi diimi muula.

İpo bhahumvwa amantu ganda akhoole mwi diimi, “Abhiibhi, taafwa!!!” Gamo gahaga, “Naleshela umwana.” Gamo gayiga, “Naleshela ing’ombe yaani.” Ugu gwahaga, “Naleshela iha.” Ugu, “Naleshela iha.” Ihoolo zyahali nyinji tee, gahanda aje, “Taabhala.” Gaham’uziizya un’goosi, “Tibhale hwoshi?” Un’goosi ahaga, “Saali hu Safwa.” Isiku lya gahasaamaga, gahabhugulanya tee amasoohe, gahabhala hu Safwa.

Un’goosi waabho ahaga, “Naafiha pamwanya pi gamba.” Gahabana iliina igoosi tee, ipo gahabhiha idiimi lyabho. Nkashele umuntu wowonti wa saga N’safwa afiha hwi gamba ilyo, ateega.

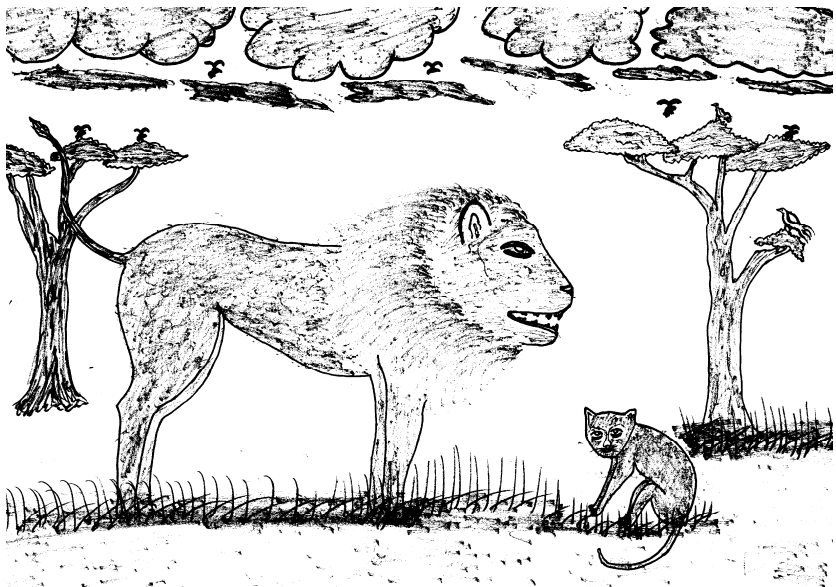
Ahwande amaaha igo idiimi ilyo bhalikwizya N’goosi. Ishi sha lyahasamiye idiimi ili hwi gamba lya Bhasafwa.

18. YEENU INYAABHU ISUNGWA AKHALE MWA BHATELESHELA ABHASHI

Abhantu bhasuga inyaabhu mu nyumba zyaabho. Leelo iNyaabhu isungwa tee akhale na bhashi, pipo isiibha huje, abhashi bhali ni khone ashile abhalume ni hanu izyinji. Imandi iNyaabhu yahakhalaga mwi gona peeka ni hanu izyinji.

Pipo ndoodo, yahogopaga akhale yeene. Yahalola aje, iyanze um'manyani un'goosi wa gamwavwa hu bhalugũ. Pipo iNsama ihoogofya, iNyaabhu yahasalula akhale peeka ni Nsama.

Lumo lwa bhahakhiye nu mwavwi waakwe iNsama, zyahinzile imbwalonde zisaanu. INsama yahamanya huje, ufwe waakwe waafiha, yahalubhũsya ulubhilo. INyaabhu yahũbha na je, "Unu saga wa khale nawo. Mwoga!" INyaabhu yahasaamila hu khaaya yi Nzovu, pipo mu nsiibho zyakwe yahaga, "Ini yi hanu ingoosi ashile zyoniti."



Isiku limo umuntu umvwimi ahayipihha inzovu ni ndusu. Yahagwa pansu, yahafwa. Umuntu ula ahasha tee, ahazubha pamwanya pa nzovu. Ipo iNyaabhu yahamanya aje, un'ume ula lyoli ya li ni khone tee. Yu wa khale nawo. Umuntu ula lwa haweela hu khaaya akwizye abhantu abha sinze inzovu, iNyaabhu yahabhala nawo. Lwa haweelaga, ahangite ulubinda lwi nzovu ishimanyishizyo aje, agojile inzovu. Lwa waafiha pa khaaya, un'shi waakwe ahan'yaayila, ahamwambiilila indusu peeka nu lubinda. INyaabhu alole isho, yahasiibha yahaga, "Unu ya li ni khone ashile bhonti mu nsi umu, yi halaje nawo. Afulile indusu ya n'ume yi gojile inzovu!"

Afume ipo, iNyaabhu ni leelo isungwa akhale mwa bhateleshela abhashi.



19. INYAABHU NAHAGAGA NGOOYI

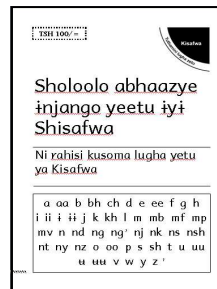
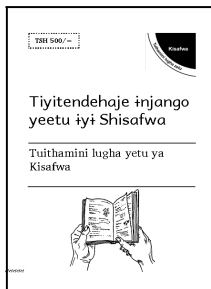
Imandi lwa nahali mwana, ũmaayi ahasyanga mu lwala. Ani nahagonile huuhati. Imandi abhamaayi bhahafumaga nagamazansha asye ũmela ũgwa tubhile ihombwa.

Ishi lwa nahagonile pi teefu paala, nahũmvwa inyintu ibuusa. Ibuusa nanshi ingooyi, ibuusa, ibuusa. Indi, “Hee! Ini ngooyi.” Ishi nahanda asiibhe huje, “Ini ngooyi ũmaayi paala yan’shila. In’shilile pii yinza huliini?” Nahadelegana, nahapootwa afuute, ayanje nahapootwa. Nahadelegiine aje, inkwizye ũmaayi. Nahagaga, “Nki nkizye ũmaayi, ibhala humbiide hwi milo, ibhala hungoje.” Agone ũtulo nahapootwa, nahadelegiine huje, “Nki njiga, injinganishe. Imbala yinganishe, bhũli bhũli, ibhala hundole na hate! Indi maayi ni maayi ziniije. Bhaana mwi! Inje bhũli leelo, mwi? Izi zya huliini.” Ipo nahakhala, nahakhala, nahalinga aje, injimbe. “Ishi injiga, mwi! Afuute impootwa, agone impootwa. ũmaayi lwa sya ihumwũmvwa. Leelo aje, injanje, ingooyi ili papipi, ibhala huhate. Mwi!” Pamandi nahajimba. Indi, “Haa! Ndaadi! Hwomo nki mfwa, ũmaayi ahamanyaje, ‘Lyoli, ũmwana waani inongwa huuhati ũhwo saga nyinza.’” Nahabhũha hwi khone, nahakhoola nahaga, “Ingooyi ihungoga.” Hee! ũmaayi ahagunduuhana, ahinza, “Ingooyi yafuma hwi ni mwana, mwi? Hee!? Ingooya ili hwoshi iyo?” Haa! Ahwenye ishi, nyaabhu, mwi! Indelegiine, indelegiine, fwandi! Ya yanogofyaga yahali nyaabhu, saga yahali ngooyi.

Vitabu hivi vya masimulizi ya Biblia vinapatikana katika lugha ya Kisafwa:

- * ƉYeesu ahun'tuula un'sahaala uwi pepo
- * ƉM'falisaayo nu n'somvya isonko
- * Amayele aga zuwule inswi zinyinji
- * ƉYeesu ahun'zyasya umwana wa m'fwile
- * ƉYeesu akhajila amabhilingwa mu nsumbi
- * ƉMusa alongoza abhaana Izilaeeli afume hu Miisili
- * ƉDaudi ahum'mena uGoliyaati

Ukipenda kujifunza kusoma Kisafwa, vijitabu hivi viwili vinatoa maelezo:



Kama una maswali yoyote, au unataka kununua vitabu, au
kuhudhuria darasa la kusoma, wasiliana na:

Namba za simu: 0767 933 797 au 0767 933 806